

CRYSTALLOPHORE™:

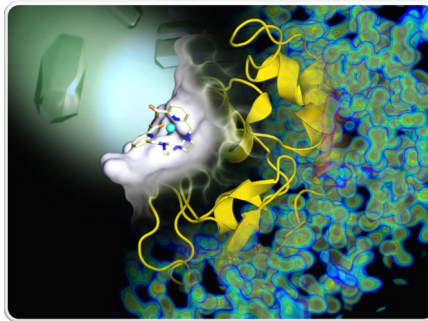
efficient, versatile and easy to use
nucleating and phasing tools



As nucleating
agent

Crystallophore N°1:

- Promotes crystal growth and reproducibility
- Improves hit rate
- Enhances crystal quality
- Induces new crystal forms
- Helps rapid, accurate crystal identification



As phasing
agent

Crystallophore N°1:

- Removes the need for Se-Met labelling
- Bypasses heavy-atom incorporation

*Crystallophore N°1 is
exclusively distributed by*



**Molecular
Dimensions**

2 ready to use vial sizes are available



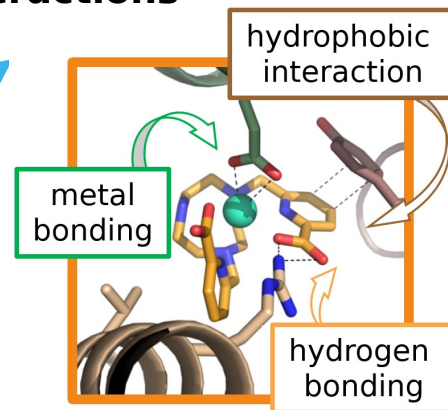
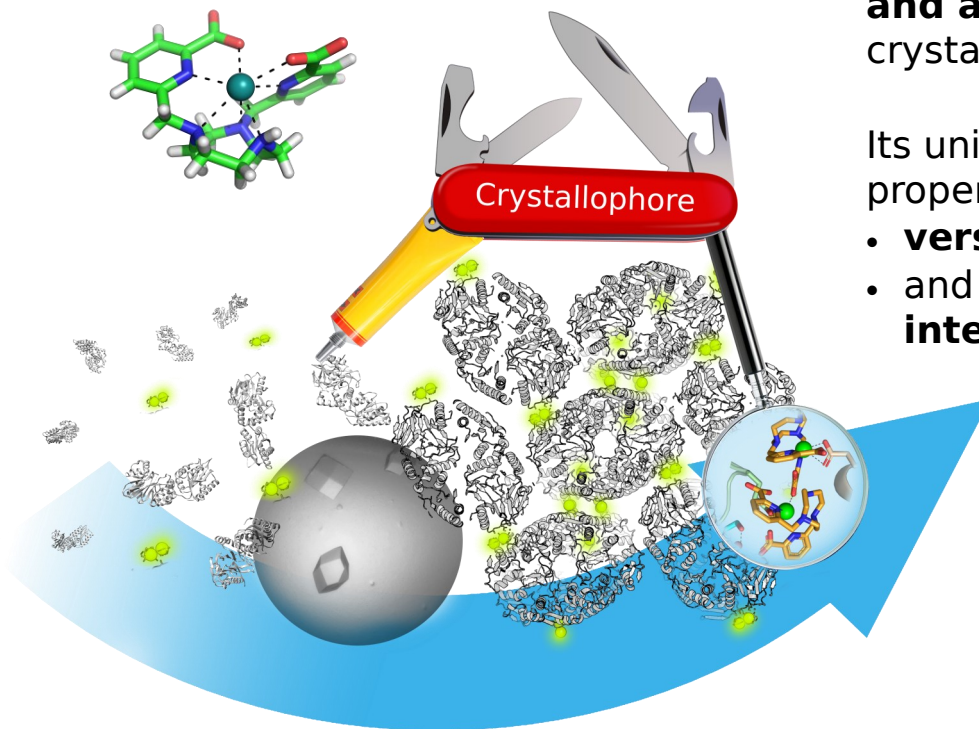
Chem. Sci., 2017,8, 5909-5917 - DOI: 10.1039/C7SC00758B
Proc Natl Acad Sci USA, 2018, 115, 3380 - DOI: 10.1073/pnas.1718649115
Chem. Eur. J., 2018 - DOI: 10.1002/chem.201802172

www.polyvalan.com - email : contact@polyvalan.com

Crystallophore N°1 is stable and adapts to any crystallization conditions.

Its unique nucleating/phasing properties are related to:

- **versatile** binding sites
- and **supramolecular interactions**



Chem. Sci., 2017,8, 5909-5917 - DOI: 10.1039/C7SC00758B

Proc Natl Acad Sci USA, 2018, 115, 3380 - DOI: 10.1073/pnas.1718649115

Chem. Eur. J., 2018 - DOI: 10.1002/chem.201802172

www.polyvalan.com - email : contact@polyvalan.com