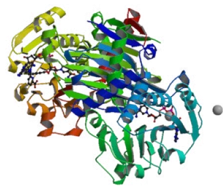
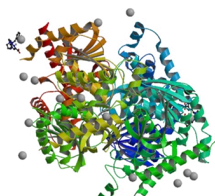


# CRYSTALLOPHORE™ / Tb-Xo4: efficient, versatile and easy to use nucleating and phasing tools



6RQA

Imminosuccinate re-  
ductase in complex  
with NAD+(a)



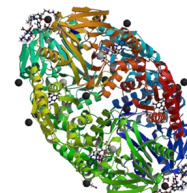
6QSS

Malate  
Dehydrogenase (b)



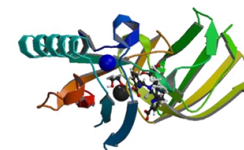
6HF7

Adenylate  
Kinase (c)



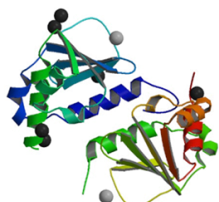
6FRN

Coenzyme F420H2  
oxidase (d)



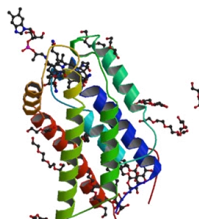
6F2M

T5 distal tail  
Protein pb9 (d)



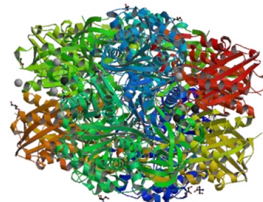
6H6N

Ubiquinone bio-  
synthesis protein



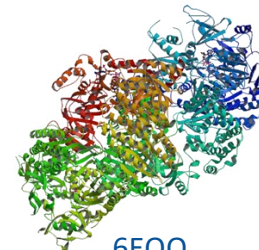
6FFV

Membrane  
transporter BtuM (f)



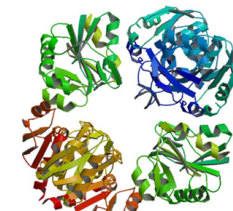
6ET9

Acetoacetyl-CoA-thiolase/HMG-  
CoA-synthase complex (g)



6EQO

Tri-functional propionyl-CoA  
synthase (h)



6Q3T

Protease1  
(i)

Some protein structures determined with Tb-Xo4 (complete list on our website)

## RELATED PAPERS

*Chem. Sci.*, 2017, 8, 5909-5917 - [10.1039/C7SC00758B](https://doi.org/10.1039/C7SC00758B)

(a) *To be published*

(b) *J Struct Biol*, 2019 - [10.1016/j.jsb.2019.07.006](https://doi.org/10.1016/j.jsb.2019.07.006)

(c) *J Appl Crystallogr*, 2019, 52, 722-731 - [10.1107/S1600576719006381](https://doi.org/10.1107/S1600576719006381)

(d) *Chem. Eur. J.*, 2018, 24, 9739-9746 - [10.1002/chem.201802172](https://doi.org/10.1002/chem.201802172)

(e) *Cell Chem Biol*, 2018, 26, 482-492 - [10.1016/j.chembiol.2018.12.001](https://doi.org/10.1016/j.chembiol.2018.12.001)

(f) *Nat Commun*, 2018, 9, 3038-3038 - [10.1038/s41467-018-05441-9](https://doi.org/10.1038/s41467-018-05441-9)

(g) *Proc Natl Acad Sci USA*, 2018, 115, 3380 - [10.1073/pnas.1718649115](https://doi.org/10.1073/pnas.1718649115)

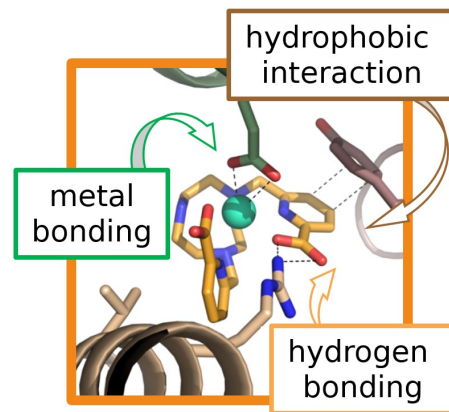
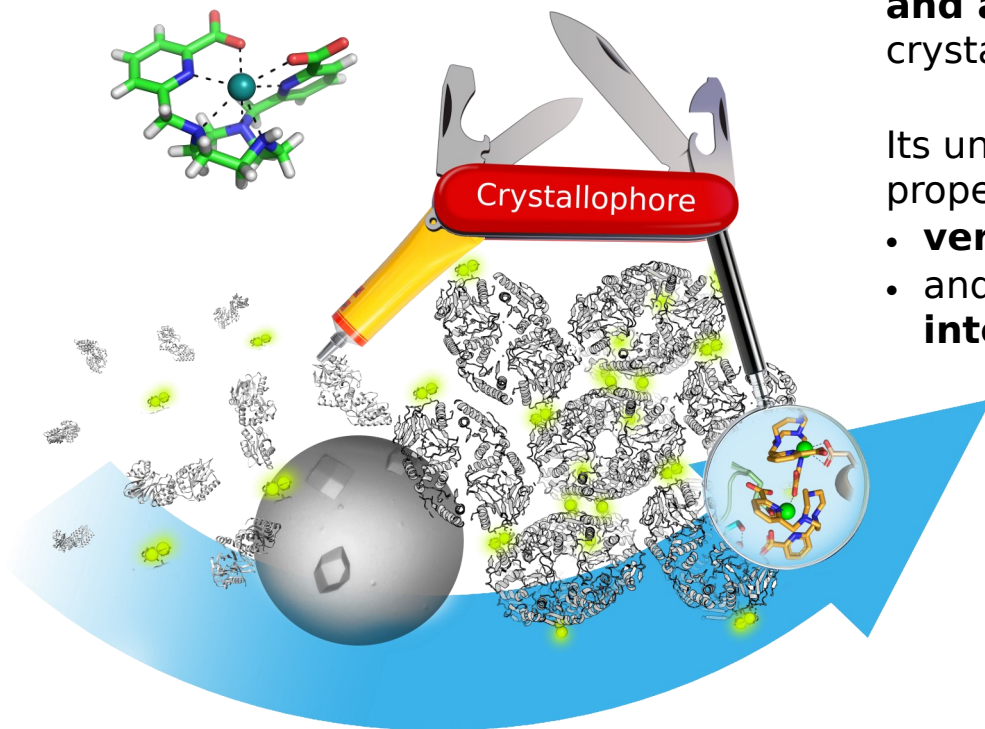
(h) *Nat Chem Biol*, 2018, 14, 1127-1132 - [10.1038/s41589-018-0153-x](https://doi.org/10.1038/s41589-018-0153-x)

(i) *IUCrJ*, 2019, 6, 454-464 - [10.1107/S2052252519003622](https://doi.org/10.1107/S2052252519003622)

**Crystallophore N°1 is stable and adapts** to any crystallization conditions.

Its unique nucleating/phasing properties are related to:

- **versatile** binding sites
- and **supramolecular interactions**



[www.polyvalan.com](http://www.polyvalan.com)

email : [contact@polyvalan.com](mailto:contact@polyvalan.com)

*Crystallophore N°1 is distributed by*



**Molecular  
Dimensions**